



NEW HYDRAULIC CULVERT - ROMA GENOVA LINE km 154+592

CLIENT
DELLA BUONA SRL

PROJECT NAME
Adjustment project of the Albegna River minor irrigation system, at km 154 + 592, construction of the hydraulic channel underpass of the Albegna spillway, on the Rome-Genoa railway line

YEAR
2017

LOCATION
Albinia - Grosseto (Italy)

DESCRIPTION:
Box Jacking under the Rome-Genoa railway line and temporary support of the tracks using the Verona System

- LAUNCH TYPE
- Open pit
 - Partial diversion
 - Tunnel
 - Temporary bridges

TRAVEL DISTANCE
18.00 m

JACKING AVG. PRODUCTION
10 m/day (excavation and mucking from the outside)

BOXES SIZE

- Base: 6.00 m
- Height: 2.90 m
- Length: 17.00 m

BOX WEIGHT
400 ton

SHUTDOWN DURATION
0 days

- EXCAVATION TYPOLOGY
- from the inside
 - from the outside

DRAWINGS

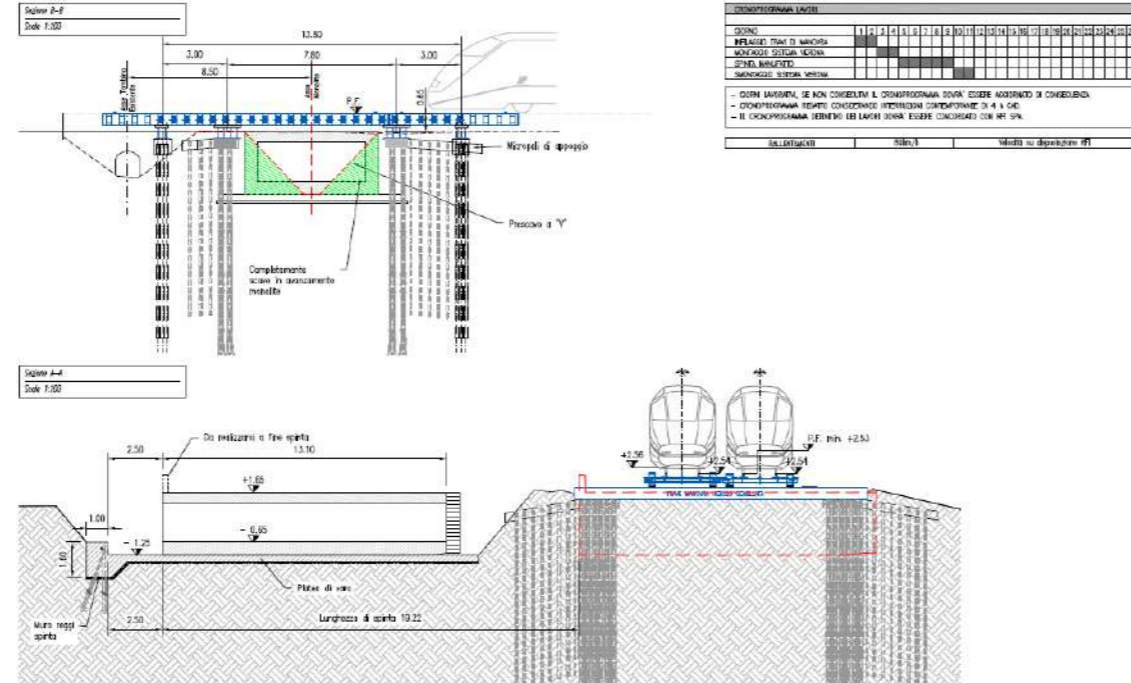


Figure 1 - Sections

PICTURES



Figure 3 - Box under Verona System

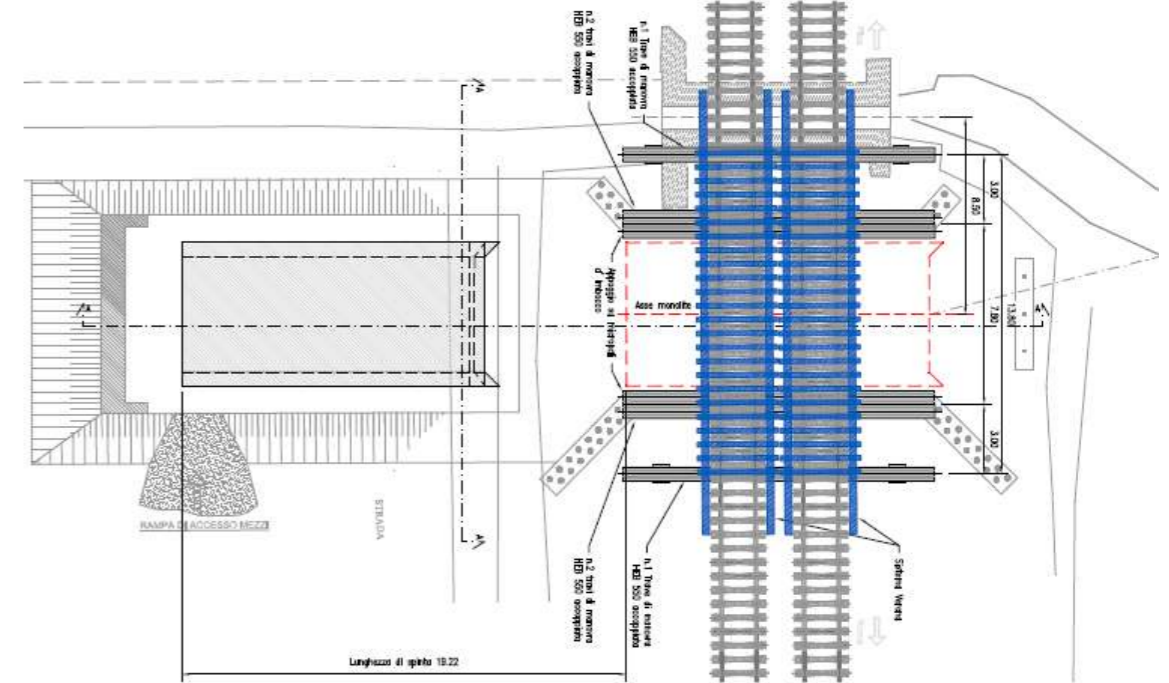


Figure 2 - Project plan



Figure 4 - Temporary bridges - Verona System

NEW HYDRAULIC CULVERT – ROMA GENOVA LINE km 154+592

CLIENT
DELLA BUONA SRL

PROJECT NAME
Adjustment project of the Albegna River minor irrigation system, at km 154 + 592, construction of the hydraulic channel underpass of the Albegna spillway, on the Rome-Genoa railway line

YEAR
2017

LOCATION
Albinia – Grosseto (Italy)

DESCRIPTION:
Box Jacking under the Rome-Genoa railway line and temporary support of the tracks using the Verona System

LAUNCH TYPE
 Open pit
 Partial diversion
 Tunnel
 Temporary bridges

TRAVEL DISTANCE
18.00 m

JACKING AVG. PRODUCTION
10 m/day (excavation and mucking from the outside)

BOXES SIZE
- Base: 6.00 m
- Height: 2.90 m
- Length: 17.00 m

BOX WEIGHT
400 ton

SHUTDOWN DURATION
0 days

EXCAVATION TYPOLOGY
 from the inside
 from the outside

PICTURES



Figure 5 – Active traffic and temporary bridges installed on track



Figure 6 – Temporary bridges installed and excavation



Figure 7 – Box pushed under Verona System



Figure 8 – Jacking System